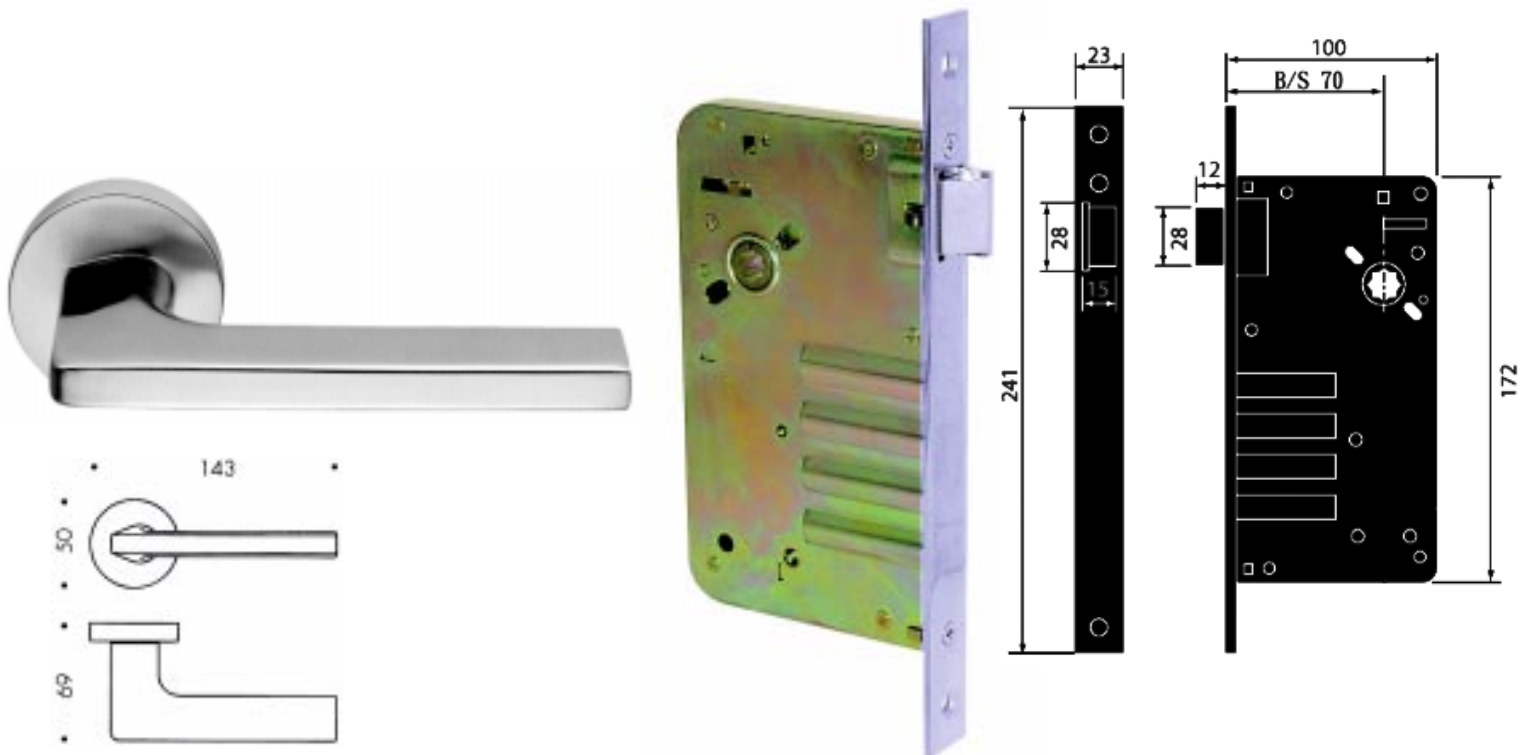



Product Description : "COLOMBO" AF254-JM11-RSB-C+ "BONCO" AF254-B2-4626P-F21  
70MM B/S LEVER HANDLE EUROPROFILE MORTISE PASSAGE LOCKSET,  
CHROME FINISH

Item Photo Image & Details :



LOCATIONS	EXTERNAL APPEARANCES		OPERATIONS
	OUTSIDE	INSIDE	
Passage			Latchbolt by levers both sides.

Date : 22 Dec 2011

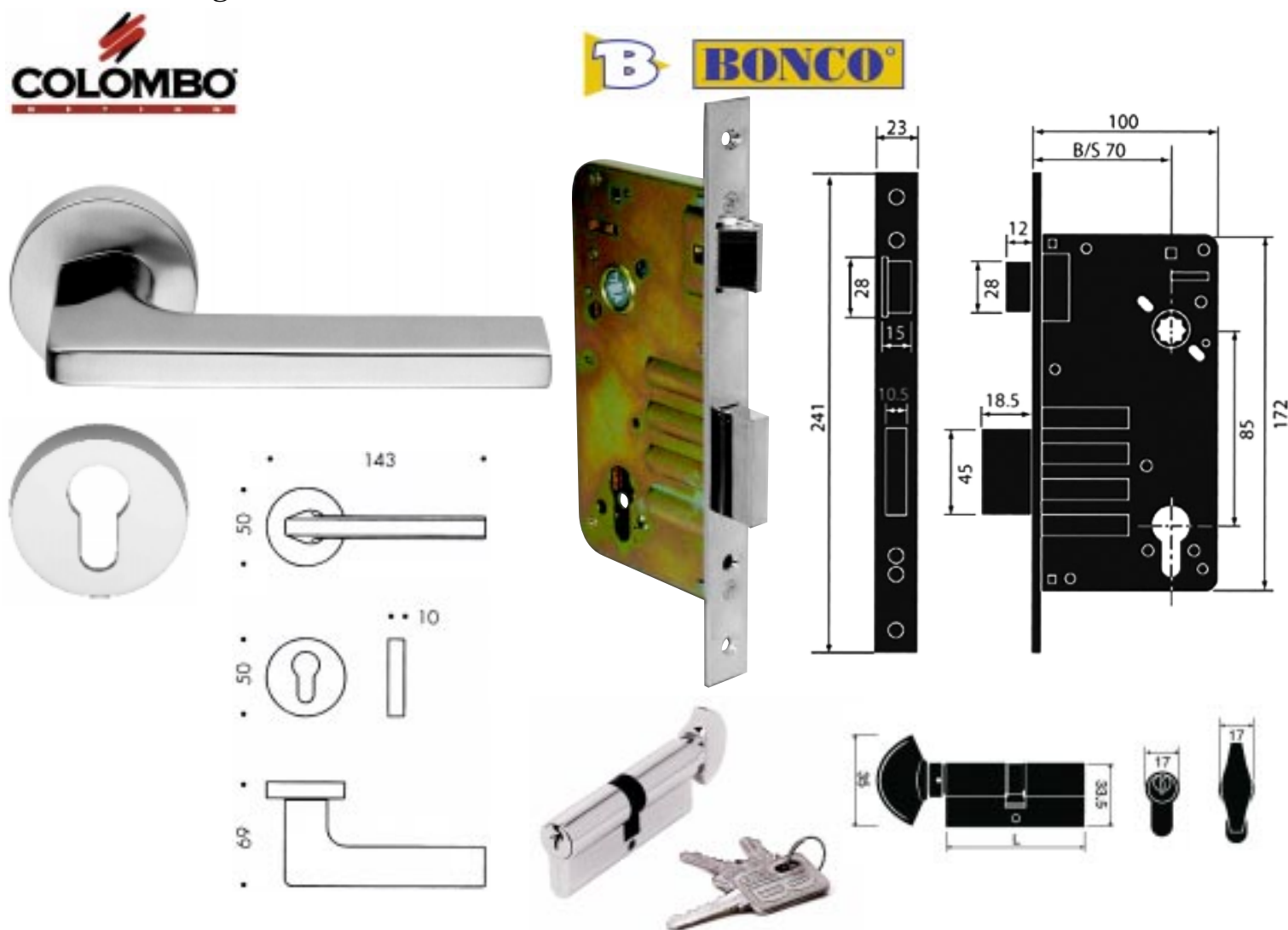
Ref. : AF2JY-1088-IR (L36)~AF2-467-IR (L36) / JY



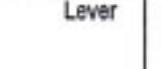
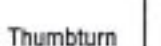
Item Code : L36 - L1

Type : LOCKSET

Product Description : "COLOMBO" AF254-JM11-RY-C+ "BONCO" AF254-B2-4626-4622S-F21  
 70MM B/S LEVER HANDLE EUROPFILE MORTISE ENTRANCE LOCKSET  
 WITH CYLINDER & TURN, CHROME FINISH

Item Photo Image & Details :



LOCATIONS	EXTERNAL APPEARANCES		OPERATIONS
	OUTSIDE	INSIDE	
Entrance	Lever  Cylinder 	Lever  Thumbturn 	Latchbolt by levers both sides. Deadbolt by key outside, by thumbturn inside.

Date : 22 Dec 2011

Ref. : AF2JY-1088-IR (L36)~ AF2-467-IR (L36) / JY

**Massford (HK) Ltd. 美富 (香港) 有限公司** A Member of E. Bon Holdings (HKEx stock code 509)  
 17/F, First Commercial Building, 33 Leighton Road, Causeway Bay, Hong Kong. 香港銅鑼灣禮頓道33號第一商業大廈17樓  
 Tel : (852) 2891 6860 Fax : (852) 2834 3029 info@massford.com www.ebon.com.hk

The Seller shall be under no liability for any loss or damage resulting from misuse, neglect, omission or corrosion due to abnormal exposure to chemicals, adverse environment, accident to the product, fire, misuse or improper installation. Manufacturers may change specifications, terms and conditions without prior notice, products shown in the corresponding catalogue are for reference only. No warranty nor guarantee, expressed or implied is given. 所有人士為請留意：平正建築業，適用建築材料而導致質量受損均不盡對其負責。生產商因產品受環境而更正有關規格及參數不會先行通知。目錄內所有圖則與附件，以產品實物為準。(所有中文與英文均同等有效，如有歧義，以英文為準。)

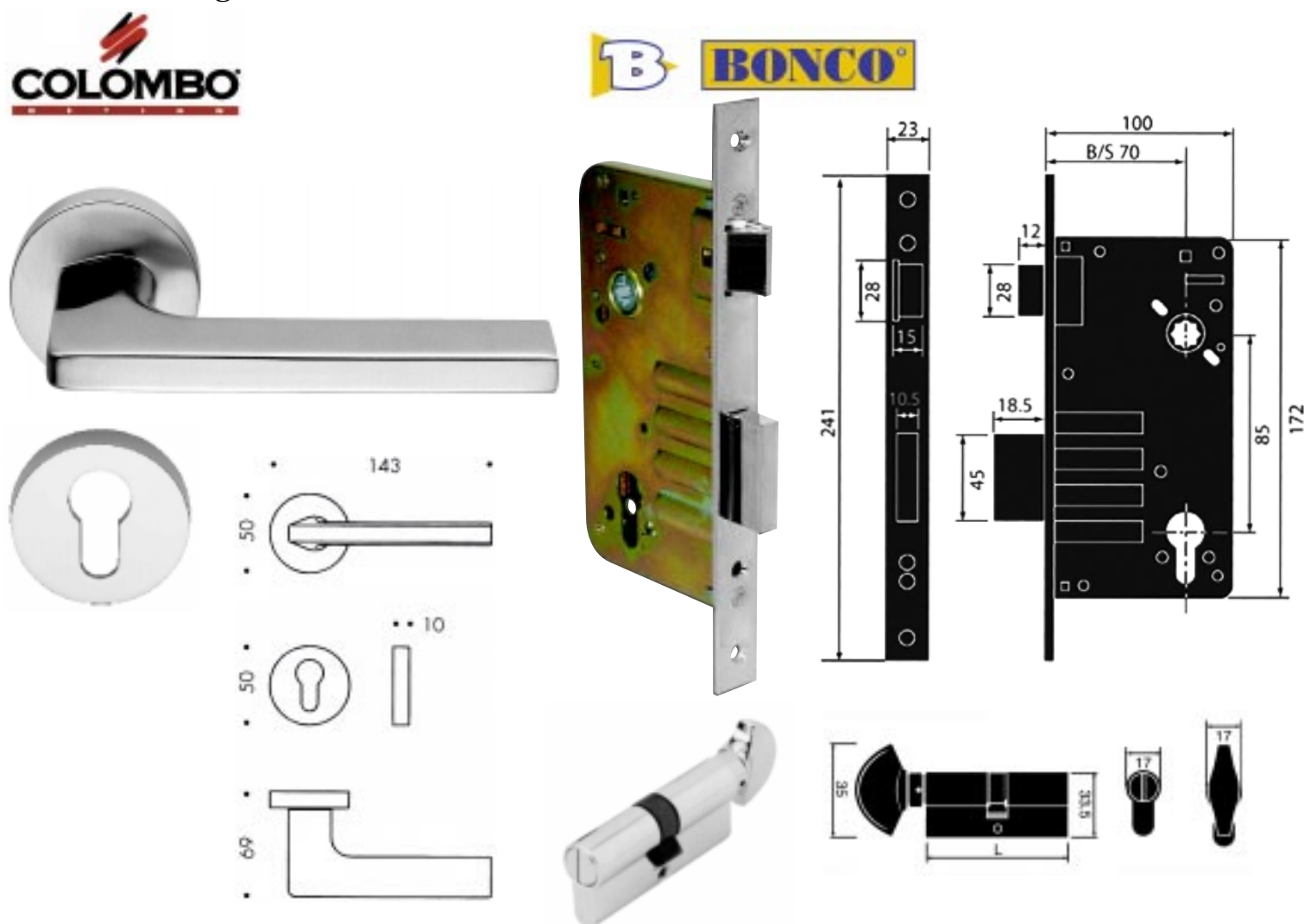
**MASSFORD**

Item Code : L36 - L3

Type : LOCKSET

Product Description : "COLOMBO" AF254-JM11-RY-C+ "BONCO" AF254-B2-4626-4622T-F21  
 70MM B/S LEVER HANDLE EUROPFILE MORTISE PRIVACY LOCKSET  
 WITH EMERGENCY RELEASE & TURN, CHROME FINISH

Item Photo Image & Details :



LOCATIONS	EXTERNAL APPEARANCES		OPERATIONS
	OUTSIDE	INSIDE	
Privacy	Lever	Lever	Latchbolt by levers both sides. Deadbolt by coins outside, by thumbturn inside.
	Emergency	Thumbturn	

Date : 22 Dec 2011

Ref. : AF2JY-1088-IR (L36)~ AF2-467-IR (L36) / JY

**Massford (HK) Ltd. 美富 (香港) 有限公司** A Member of E. Bon Holdings (HKEx stock code 509)  
 17/F, First Commercial Building, 33 Leighton Road, Causeway Bay, Hong Kong. 香港銅鑼灣禮頓道33號第一商業大廈17樓  
 Tel : (852) 2891 6860 Fax : (852) 2834 3029 info@massford.com www.ebon.com.hk

The Seller shall be under no liability for any loss or damage resulting from misuse, neglect, omission or corrosion due to abnormal exposure to chemicals, adverse environment, accident to the product, fire, misuse or improper installation. Manufacturers may charge specifications, terms and conditions without prior notice, products shown in the corresponding catalogue are for reference only. No warranty nor guarantee, expressed or implied is given. 所有損失及損壞 - 不正確安裝、濫用、疏忽、遺漏或因異常暴露於化學品、惡劣環境、意外、產品損壞、火災、誤用或安裝不當所致。生產商保留更改規格而更正有關產品及條款不會另行通知。目錄內所有圖則與規格，只供參考。 (所有中文與英文均同等有效，以英文為準)

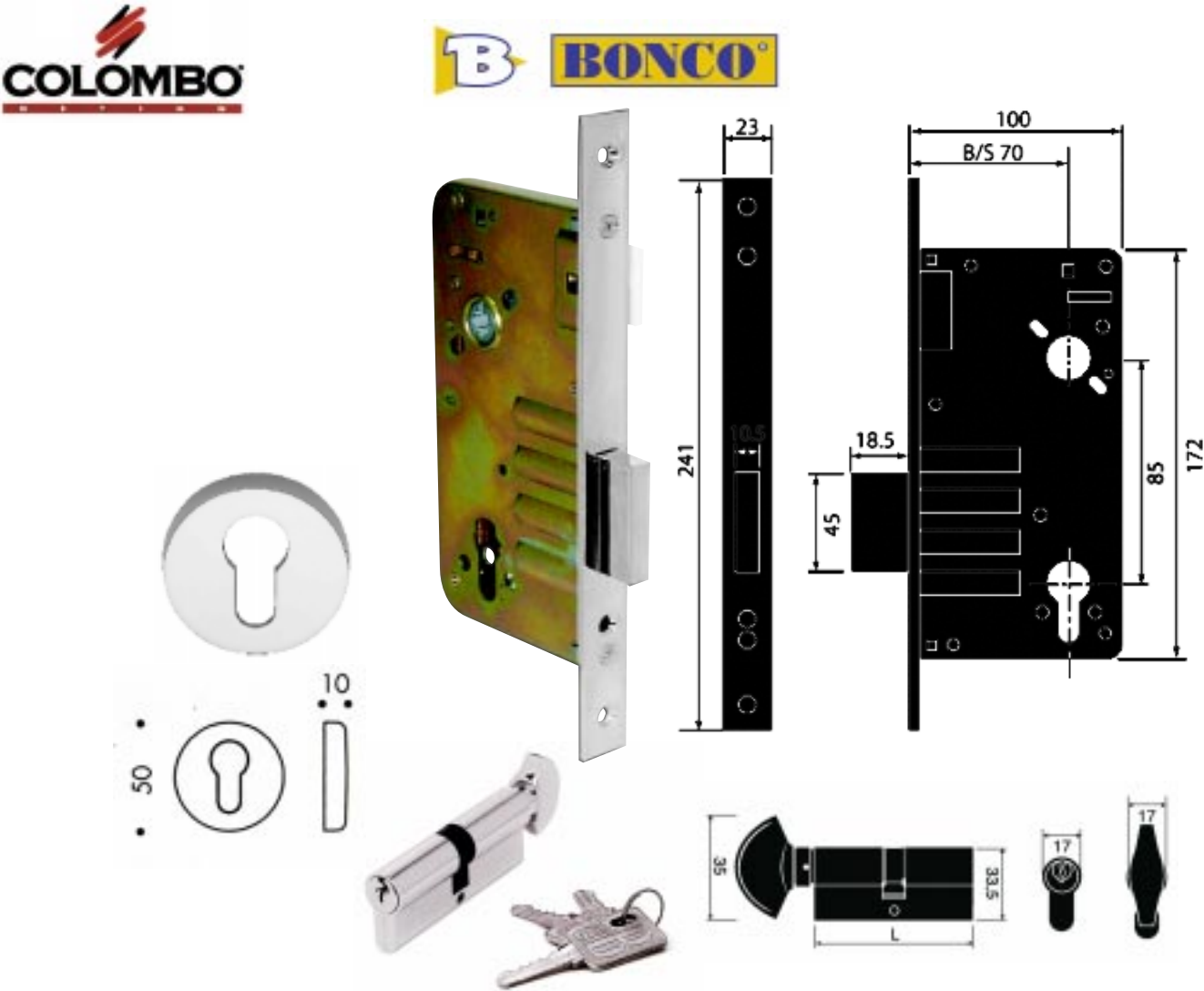
**MASSFORD**

Item Code :L36 - L4

Type :LOCKSET

Product Description : "COLOMBO" AF254-CD43GB-C+ "BONCO" AF254-B2-4626D-4622S-F21  
70MM B/S CYLINDER ESCUTCHEONS EUROPFILE MORTISE DEADLOCK  
WITH CYLINDER & TURN, CHROME FINISH

Item Photo Image & Details :



LOCATIONS	EXTERNAL APPEARANCES		OPERATIONS
	OUTSIDE	INSIDE	
Single Cylinder Deadlock	Cylinder 	Thumbturn 	Deadbolt by key outside, by thumbturn inside.

Date : 22 Dec 2011

Ref. : AF2JY-1088-IR (L36)~ AF2-467-IR (L36) / JY



Item Code : L36 - L5

Type : LOCKSET

Product Description : "COLOMBO" AF254-CD43GB-C+ "BONCO" AF254-B2-4626S-4622S-F21  
70MM B/S CYLINDER ESCUTCHEONS EUROPORFILE MORTISE NIGHT LATCH  
WITH CYLINDER & TURN, CHROME FINISH

Item Photo Image & Details :



LOCATIONS	EXTERNAL APPEARANCES		OPERATIONS
	OUTSIDE	INSIDE	
NightLatch	Cylinder	Thumbturn	Latchbolt by key outside, by thumbturn inside.

Date : 22 Dec 2011

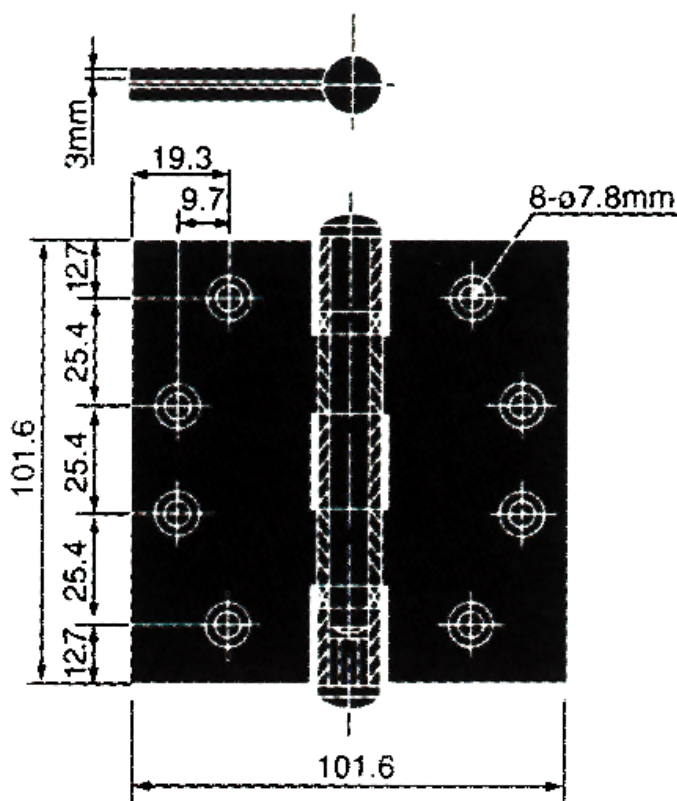
Ref. : AF2JY-1088-IR (L36)~ AF2-467-IR (L36) / JY

Item Code : L36 - H1

Type : HINGE

Product Description : "BONCO" AF254-B1-4430BB-F25 102X102X3.0MM S/S BUTT HINGE  
 WITH 2 BALL BEARING WASHER, POLISHED S/S FINISH

Item Photo Image & Details :



Date : 22 Dec 2011

Ref. : AF2JY-1088-IR (L36)~ AF2-467-IR (L36) / JY

**Massford (HK) Ltd. 美富 (香港) 有限公司** A Member of E. Bon Holdings (HKEx stock code 599)

17/F, First Commercial Building, 33 Leighton Road, Causeway Bay, Hong Kong. 香港銅鑼灣禮頓道33號第一商業大廈17樓  
 Tel : (852) 2891 6860 Fax : (852) 2834 3029 info@massford.com www.ebon.com.hk

The Seller shall be under no liability for any loss or damage resulting from misuse, neglect, omission or corrosion due to abnormal exposure to chemicals, adverse environment, accident to the product, fire, misuse or improper installation. Manufacturers may change specifications, terms and conditions without prior notice, products shown in the corresponding catalogue are for reference only. No warranty nor guarantee, expressed or implied is given. 所有因人為損壞、不正使用、疏忽、遺漏或因環境因素造成之損壞均不在此賣方負責。生產商因產品受環境因素而更改規格及產品圖樣恕不另行通知。目錄內所有圖樣與規格，以原廠圖樣為準。(所有中文圖文均係參考，恕不以此為準)

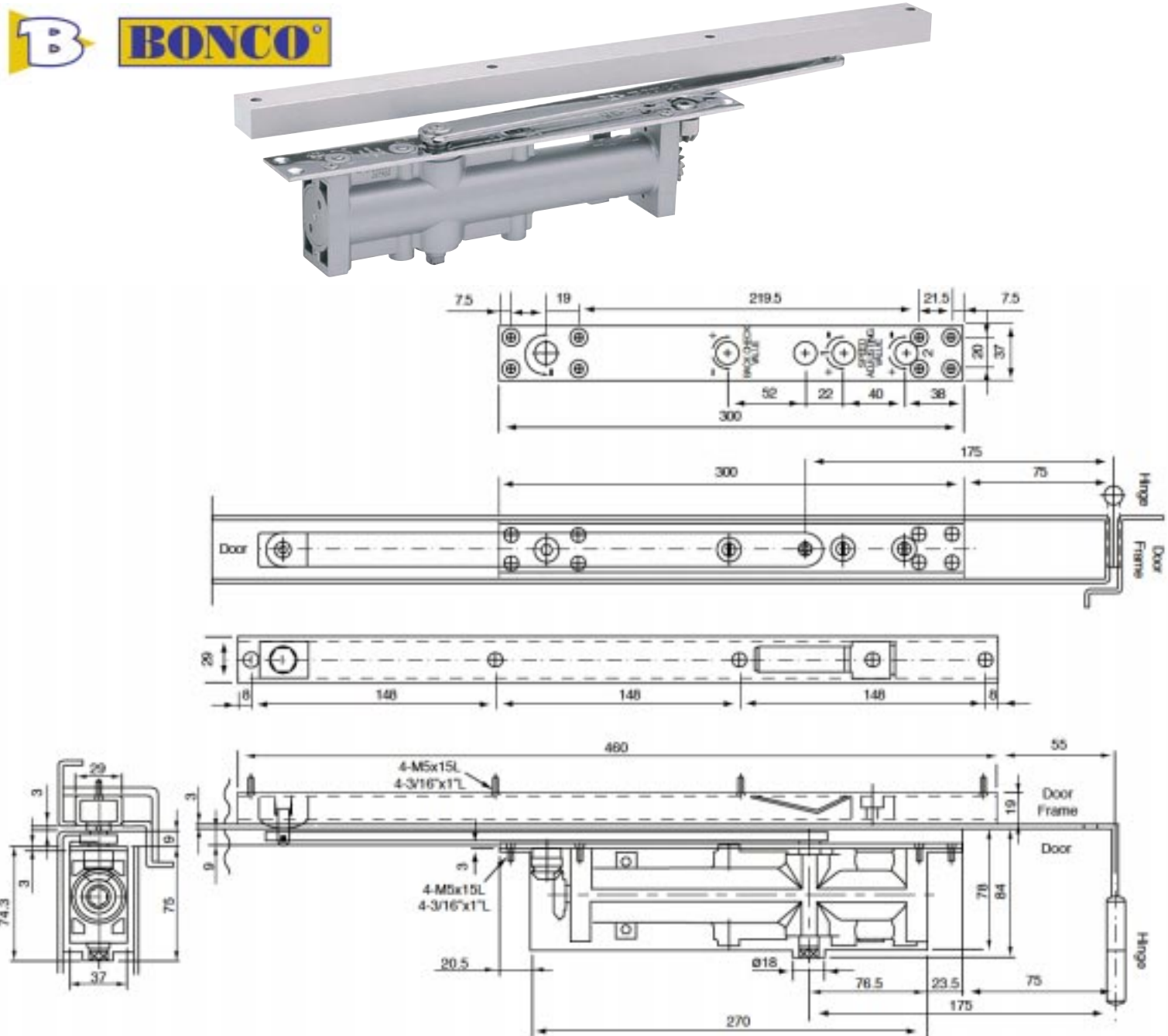
**MASSFORD**

Item Code : L36 - C1

Type : CLOSER

Product Description : "BONCO" AF254-B3-CR3835-F72 SIZE 2~4 CONCEALED MOUNTED  
 OVERHEAD DOOR CLOSER, SILVER FINISH  
 (MAX. SPRING STRENGTH 80kg)

Item Photo Image & Details :



Date : 22 Dec 2011

Ref. : AF2JY-1088-IR (L36)~ AF2-467-IR (L36) / JY

**Massford (HK) Ltd. 美富 (香港) 有限公司** A Member of E. Bon Holdings (HKEx stock code 509)

17/F, First Commercial Building, 33 Leighton Road, Causeway Bay, Hong Kong. 香港銅鑼灣禮頓道33號第一商業大廈17樓  
 Tel : (852) 2891 6860 Fax : (852) 2834 3029 info@massford.com www.ebon.com.hk

The Seller shall be under no liability for any loss or damage resulting from misuse, neglect, omission or corrosion due to abnormal exposure to chemicals, adverse environment, accident to the product, fire, misuse or improper installation. Manufacturers may change specifications, terms and conditions without prior notice, products shown in the corresponding catalogue are for reference only. No warranty nor guarantee, expressed or implied is given. 所有因人為誤用、不正確安裝、適用環境物料而導致之損失或損壞均不會對賣方負責。生產商因產品受環境而更改規格或產品圖樣恕不另行通知。目錄內所有圖樣與規格，只供參考。本公司不作出任何明示或隱含之保證。

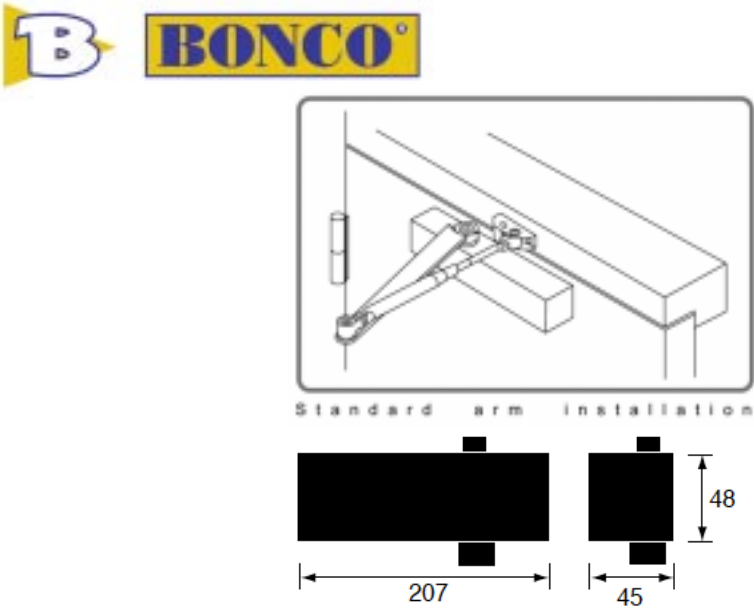
**MASSFORD**

Item Code : L36 - C2

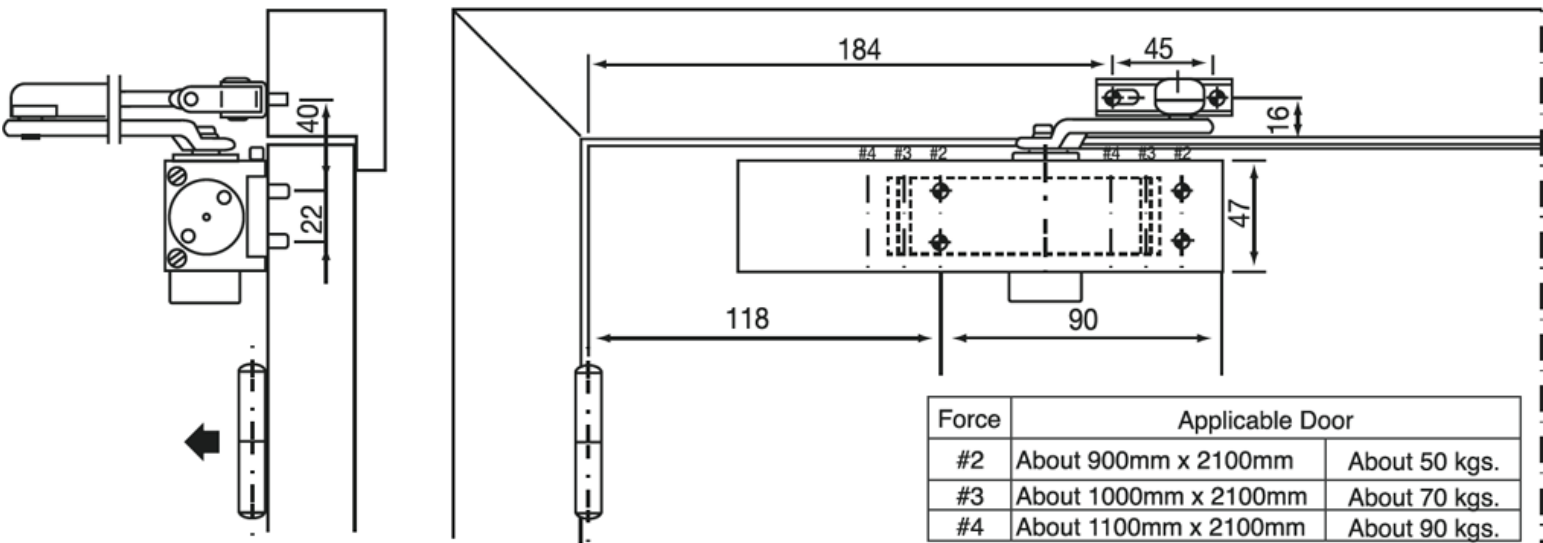
Type : CLOSER

Product Description : "BONCO" AF254-B3-1000-F72 SIZE 2-4 SURFACE MOUNTED OVERHEAD DOOR CLOSER, SILVER FINISH  
(MAX. SPRING STRENGTH 80kg)

Item Photo Image & Details :



Door Leaf fixing, pull side  
(Example refers to left-hand door; mirror image applies to right-hand door)



Date : 22 Dec 2011

Ref. : AF2JY-1088-IR (L36)~ AF2-467-IR (L36) / JY

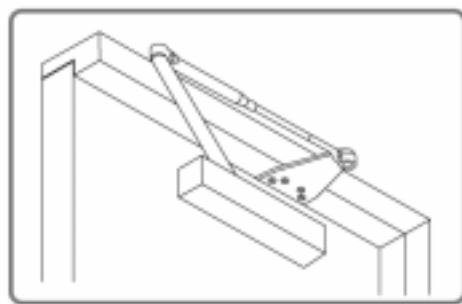


Item Code : L36 - C3

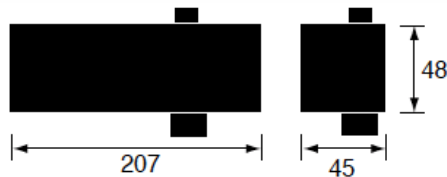
Type : CLOSER

Product Description : "BONCO" AF254-B3-P1000-F72 SIZE 2-4 SURFACE MOUNTED OVERHEAD DOOR CLOSER WITH PARALLEL ARM, SILVER FINISH  
 (MAX. SPRING STRENGTH 80kg)

Item Photo Image & Details :



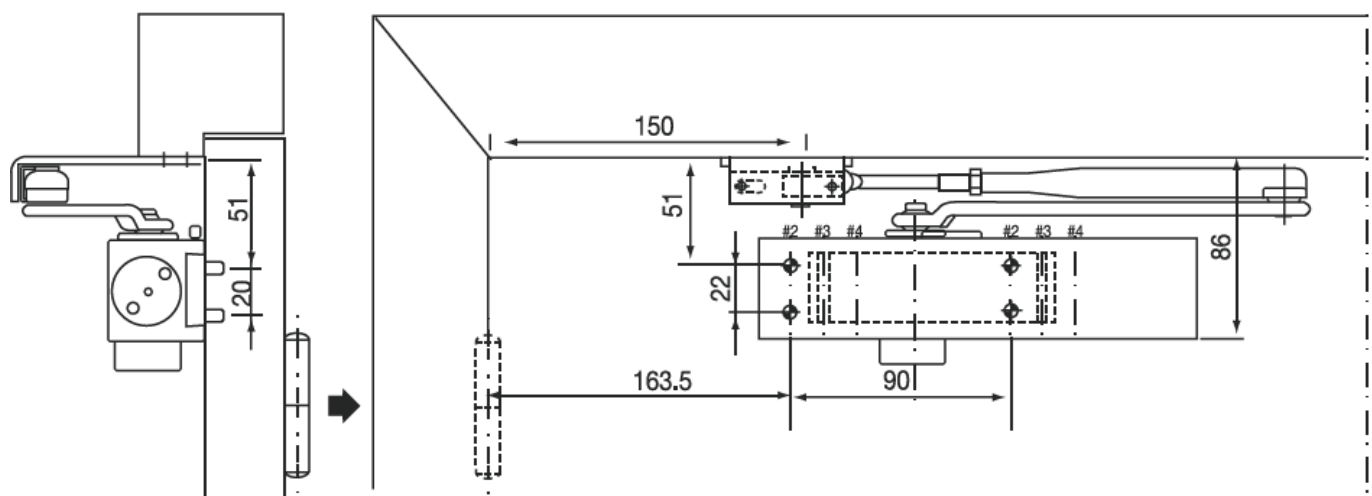
Parallel arm installation



Parallel-arm fixing, push side

(Example refers to left-hand door; mirror image applies to right-hand door)

Parallel-arm bracket (accessory) Necessary



Date : 22 Dec 2011

Ref. : AF2JY-1088-IR (L36)~ AF2-467-IR (L36) / JY

**Massford (HK) Ltd. 美富 (香港) 有限公司** A Member of E. Bon Holdings (HKEx stock code 599)

17/F, First Commercial Building, 33 Leighton Road, Causeway Bay, Hong Kong. 香港銅鑼灣禮頓道33號第一商業大廈17樓  
 Tel : (852) 2891 6860 Fax : (852) 2834 3029 info@massford.com www.ebon.com.hk

The Seller shall be under no liability for any loss or damage resulting from misuse, neglect, omission or corrosion due to abnormal exposure to chemicals, adverse environment, accident to the product, fire, misuse or improper installation. Manufacturers may change specifications, terms and conditions without prior notice, products shown in the corresponding catalogue are for reference only. No warranty nor guarantee, expressed or implied is given. 賣方對因人為誤用、不正確安裝、適用環境物料而導致產品受損均不盡對賣方負責。生產商保留變更規格而更正有關圖紙及單據不會先行通知。目錄內所有圖紙與單據，以原廠圖紙為準。(所有中文圖文均係參考，均以英文為準)

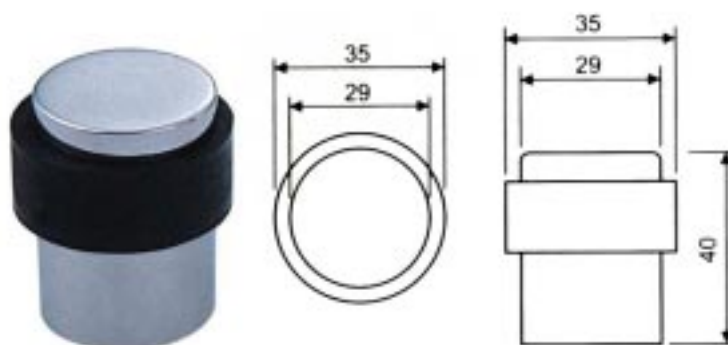
**MASSFORD**

Item Code : L36 - S1

Type : STOPPER

Product Description : "MF" AF254-DH005-PSS S/S FLOOR MOUNTED DOOR STOP,  
POLISHED S/S FINISH

Item Photo Image & Details :



Date : 22 Dec 2011

Ref. : AF2JY-1088-IR (L36)~ AF2-467-IR (L36) / JY

Massford (HK) Ltd. 美富 (香港) 有限公司 A Member of E. Bon Holdings (HKEx stock code 509)

17/F, First Commercial Building, 33 Leighton Road, Causeway Bay, Hong Kong. 香港銅鑼灣禮頓道33號第一商業大廈17樓  
Tel : (852) 2891 6860 Fax : (852) 2834 3029 info@massford.com www.ebon.com.hk

The **Seller** shall be under no liability for any loss or damage resulting from misuse, neglect, omission or corrosion due to abnormal exposure to chemicals, adverse environment, accident to the product, fire, misuse or improper installation.  
**Manufacturers** may change specifications, terms and conditions without prior notice, products shown in the corresponding catalogue are for reference only. No warranty nor guarantee, expressed or implied is given.  
所有因人為誤用、不正使用、疏忽、遺漏或因環境因素導致產品損壞均不會對賣方負責。生產廠因產品受環境因素而更改規格款式及參數不會先行通知。目錄內所有圖樣與說明書，以原廠圖樣為準。(所有中文與英文文件，均以英文為準)

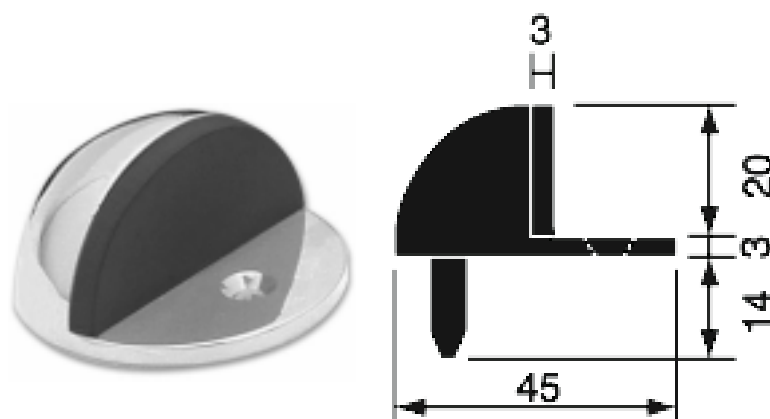
MASSFORD

Item Code : L36 - S2

Type : STOPPER

Product Description : "BONCO" AF254-B5-DS003-F21 DOME SHAPE FLOOR MOUNTED  
DOOR STOP, CHROME PLATED FINISH

Item Photo Image & Details :



Date : 22 Dec 2011

Ref. : AF2JY-1088-IR (L36)~ AF2-467-IR (L36) / JY

**Massford (HK) Ltd. 美富 (香港) 有限公司** A Member of E. Bon Holdings (HKEx stock code 509)

17/F, First Commercial Building, 33 Leighton Road, Causeway Bay, Hong Kong. 香港銅鑼灣禮頓道33號第一商業大廈17樓  
Tel : (852) 2891 6860 Fax : (852) 2834 3029 info@massford.com www.ebon.com.hk

The Seller shall be under no liability for any loss or damage resulting from misuse, neglect, omission or corrosion due to abnormal exposure to chemicals, adverse environment, accident to the product, fire, misuse or improper installation. Manufacturers may change specifications, terms and conditions without prior notice, products shown in the corresponding catalogue are for reference only. No warranty nor guarantee, expressed or implied is given. 所有因人為誤用、不正使用、疏忽、遺漏或因環境因素導致之損壞均不會對賣方負責。生產商因產品受環境因素而更改規格及產品不會先行通知。目錄內所有圖則與條件，以產品實際為準。(所有中文與英文條件，均以英文為準。)

**MASSFORD**

Item Code : L36 - PBK

Type : MISCELLANEOUS

Product Description : "BONCO" AF254-B5-KP3001-F21 RETRACTABLE PUSH BUTTON KNOB,  
CHROME PLATED FINISH

Item Photo Image & Details :



Date : 22 Dec 2011

Ref. : AF2JY-1088-IR (L36)~ AF2-467-IR (L36) / JY

Massford (HK) Ltd. 美富 (香港) 有限公司 A Member of E. Bon Holdings (HKEx stock code 509)

17/F, First Commercial Building, 33 Leighton Road, Causeway Bay, Hong Kong. 香港銅鑼灣禮頓道33號第一商業大廈17樓  
Tel : (852) 2891 6860 Fax : (852) 2834 3029 info@massford.com www.ebon.com.hk

The Seller shall be under no liability for any loss or damage resulting from misuse, neglect, omission or corrosion due to abnormal exposure to chemicals, adverse environment, accident to the product, fire, misuse or improper installation.  
Manufacturers may change specifications, terms and conditions without prior notice, products shown in the corresponding catalogue are for reference only. No warranty nor guarantee, expressed or implied is given.  
所有因人為誤用、不正確安裝、適用環境物料而導致貨品損壞均不會對賣方負責。生產廠因應環境改變而更改規格產品及參數不會先行通知。目錄內所有圖則與規格，以原廠圖則為準。(所有中文與英文文件，均以英文為準)

MASSFORD



Item Code : L36 - ST1

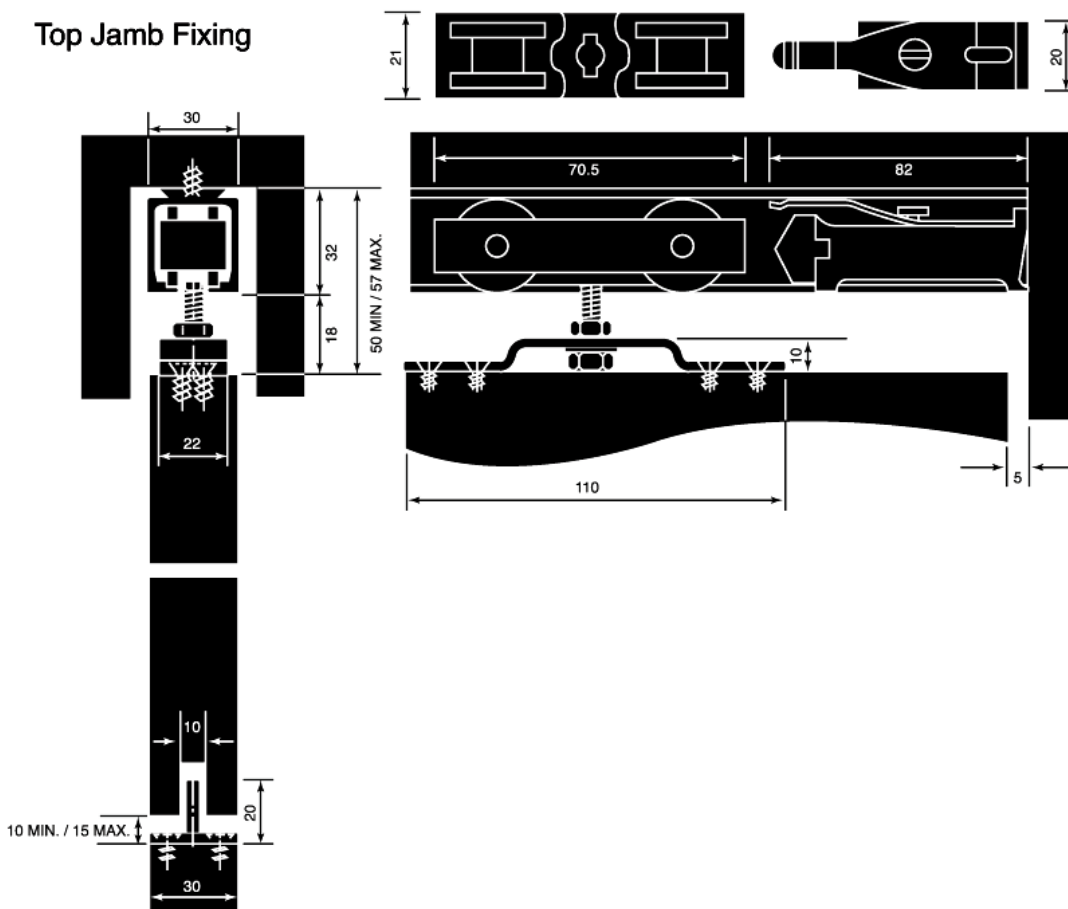
Type : MISCELLANEOUS

Product Description : "BONCO" AF254-B5-DT082-F72-2M SLIDING DOOR TRACK WITH ACCESSORIES, SILVER FINISH  
 (MAX. SPRING STRENGTH 120kg)

Item Photo Image & Details :



**Top Jamb Fixing**



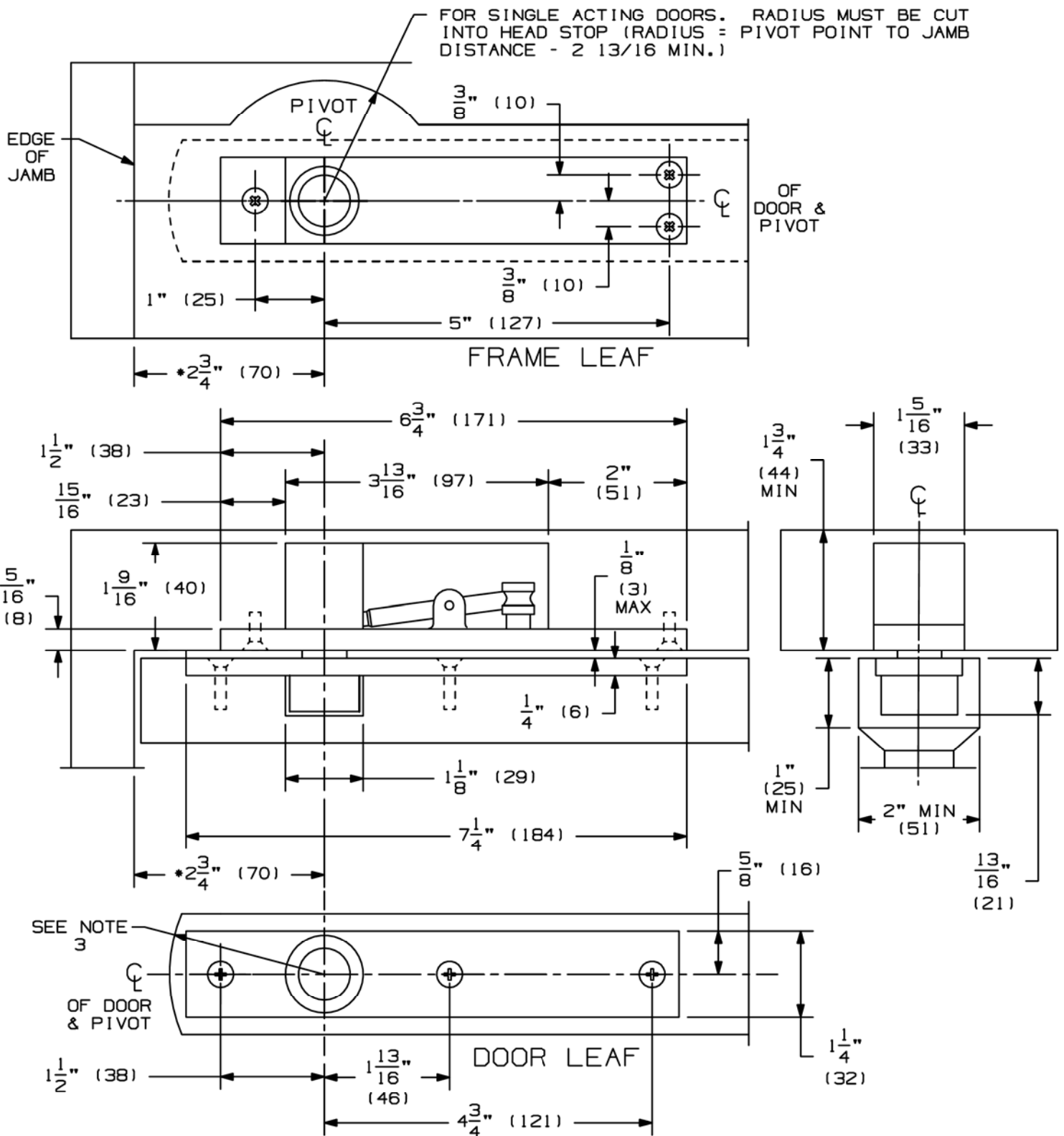
Date : 22 Dec 2011

Ref. : AF2JY-1088-IR (L36)~ AF2-467-IR (L36) / JY

**Massford (HK) Ltd. 美富 (香港) 有限公司** A Member of E. Bon Holdings (HKEx stock code 509)  
 17/F, First Commercial Building, 33 Leighton Road, Causeway Bay, Hong Kong. 香港銅鑼灣禮頓道33號第一商業大廈17樓  
 Tel : (852) 2891 6860 Fax : (852) 2834 3029 info@massford.com www.ebon.com.hk

The Seller shall be under no liability for any loss or damage resulting from misuse, neglect, omission or corrosion due to abnormal exposure to chemicals, adverse environment, accident to the product, fire, misuse or improper installation. Manufacturers may change specifications, terms and conditions without prior notice, products shown in the corresponding catalogue are for reference only. No warranty nor guarantee, expressed or implied is given. 所有因人為損壞、不正使用、疏忽、遺漏或因環境因素導致之損壞均不會對賣方負責。生產商因產品受環境因素而更改規格或產品圖樣恕不另行通知。目錄內所有圖樣與規格，以原廠圖樣為準。(所有中文與英文均同等有效，如有歧義，以英文為準。)

**MASSFORD**



NOTES:

1. INSTALLER MUST VERIFY THAT CENTERLINE OF TOP PIVOT POINT LINES UP WITH THE CENTERLINE OF BOTTOM PIVOT POINT.
2. BOTTOM PIVOT SET SHOULD BE MOUNTED FIRST IN MOST INSTALLATIONS.
3. RADIUS OF HEEL EDGE OF DOOR MUST NOT EXCEED PIVOT POINT TO JAMB DISTANCE. STANDARD 2" RADIUS IS SHOWN.
4. PIVOTS MFG. TO ACCEPT 1/4-20 X 3/4 FPHMS OR #14 X 1-1/2 FPHWS.
- \* 5. PIVOT CENTER MAY BE VARIED AS DESIRED. MINIMUM DISTANCE IS 2 3/4 AS SHOWN.
6. REINFORCING PER ANSI/SDI-100 RECOMMENDED FOR HOLLOW METAL DOORS & FRAMES.

IVES

7259 PIVOT SET  
7259 TOP PIVOT

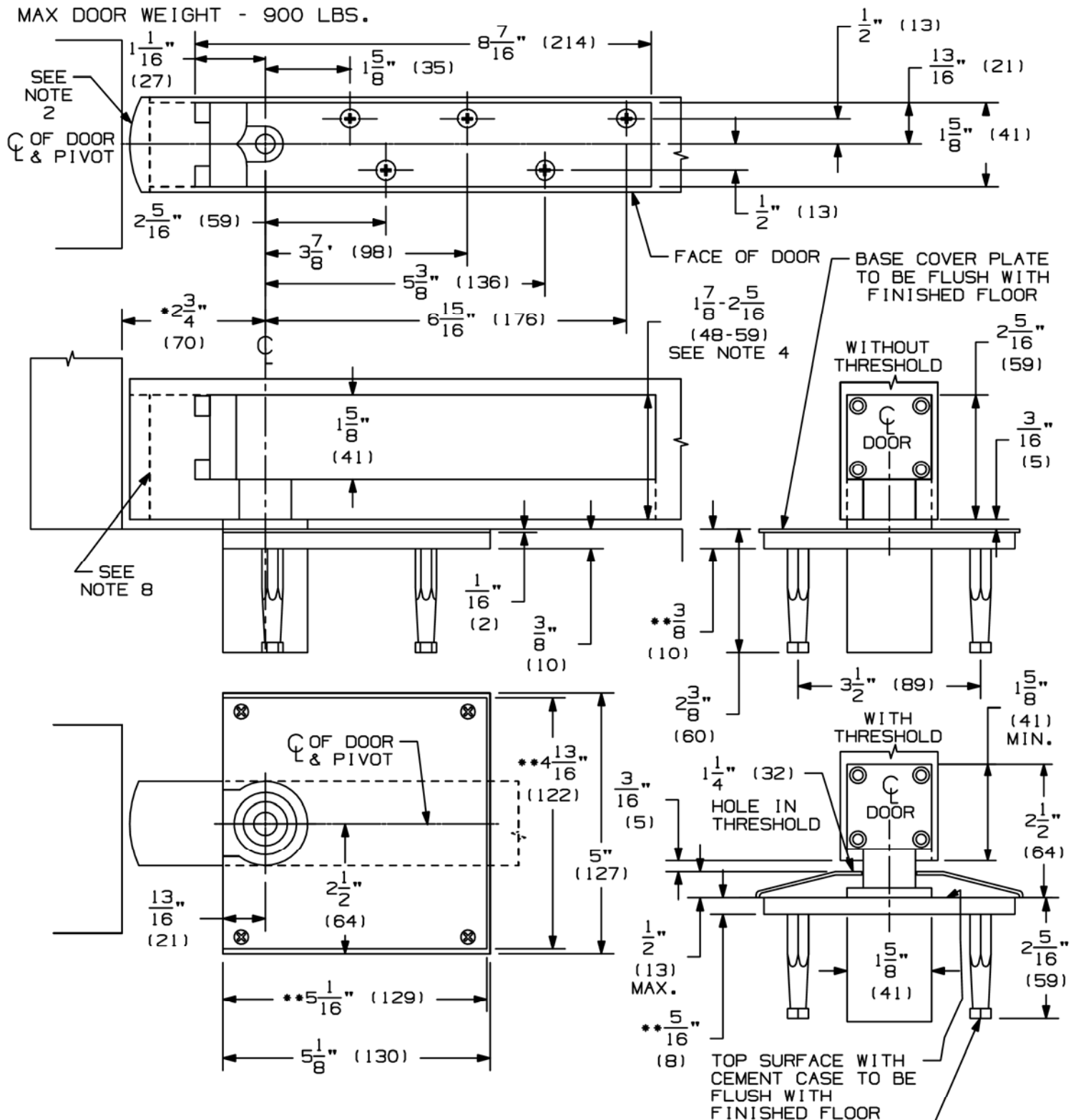
**IR Security & Safety®**

NOTE: DIMENSIONS IN ( ) ARE MILLIMETERS.

TEMPLATE  
NUMBER: INST.7259\_0.PG1

DATE:  
08-21-01

MAX DOOR WEIGHT - 900 LBS.



NOTES:

1. INSTALLER MUST VERIFY THAT CENTERLINE OF TOP PIVOT POINT LINES UP WITH CENTERLINE OF THE BOTTOM PIVOT POINT.
2. RADIUS OF HEEL EDGE OF DOOR MUST NOT EXCEED PIVOT POINT TO JAMB DISTANCE. STANDARD 2" RADIUS IS SHOWN.
3. PIVOTS MFG. TO ACCEPT 1/4-20 X 3/4 FPHMS OR #14 X 1-1/2 FPHMS.
4. BOTTOM PIVOT WILL ACCOMMODATE 3/16" TO 3/4" DOOR CLEARANCE. DOOR MORTISE DEPTH DETERMINES CLEARANCE. 1/2" MAX THRESHOLD.
5. PIVOT CENTER MAY BE VARIED AS DESIRED. MINIMUM DISTANCE IS 2 3/4" AS SHOWN.
6. REINFORCING PER ANSI/SDI-100 RECOMMENDED FOR HOLLOW METAL DOORS & FRAMES.
7. DIMENSIONS FOR CEMENT CASE OUTPUT DEPTH IS 3/8" WITHOUT THRESHOLD. 5/16" WITH THRESHOLD
8. REMOVABLE DOOR SECTION TO ALLOW ACCESS TO PIVOT LEAF BRACKET SCREWS.

IVES

7259 PIVOT SET  
7259 BOTTOM PIVOT

**IR Security & Safety®**

NOTE: DIMENSIONS IN ( ) ARE MILLIMETERS.

TEMPLATE  
NUMBER: INST.7259\_0.PG2

DATE:  
08-21-01